



IHI

COMMITTED TO QUALITY, COST & DELIVERY



PT IHI POWER SERVICE INDONESIA

Boiler Pressure Part, Piping, HRSG, Heat Exchanger,
Pressure Vessel, Steel Structure, Heavy Equipment,
Maintenance & Services Works

Values

We continuously developed and applying values that strongly support our mission.

Our values are :

- ✓ INTEGRITY
- ✓ TRANSPARENCY
- ✓ TEAMWORK
- ✓ CREATIVITY
- ✓ WINNING SPIRIT
- ✓ EXCELLENCE

Trust

When it comes to business it's all about trust. Trust that your cooperations won't fail and that you can count in your partner. PT IHI Power Service Indonesia and IHI Corporation as new share holders will be increasing our facilities, technical capability and always improving technologies. As market requirement our factory could manufacture

Boiler Pressure Parts, Piping , HRSG, Steel Structure & Heavy Equipment

With capability of 28,800 ton / year, at present condition and with our experiences we have grown into a reputable steel fabricators. We make it sure that PT IHI Power Service Indonesia can serve you with best quality products, so please don't hesitate to meet your partnership to be trust on future project.



Contents

Values & Trust	i
Foreword	2
Company Introduction	4
Company History	5
Area Plan	6
Our Service	8
1. Product	9
1.1. Steel structure & Heavy equipment	2
1.2. Industrial Equipment (HRSG, Pressure Vessel, HE, Etc.)	4
1.3. Boiler pressure part & Piping	4
1.4. Engineering Works	4
2. Maintenance	4
2.1. Life-Cycle Solutions of Thermal Power Plant	4
2.2. On-Site Assessment Service	4
2.3. Analyses & Diagnosis Services	4
2.4. Operation & Maintenance Assistance Services	4
2.5. Toward Carbon-Neutral Society	4
Facilities	4
Certification	4
Our Experience Worldwide	4

Foreword

We, **PT IHI Power Service Indonesia** was established in March 1984 by JEL Singapore and PT. Tri Usaha Bakti, and has since grown into a reputable steel fabricator which supplies products to customers all over the world.

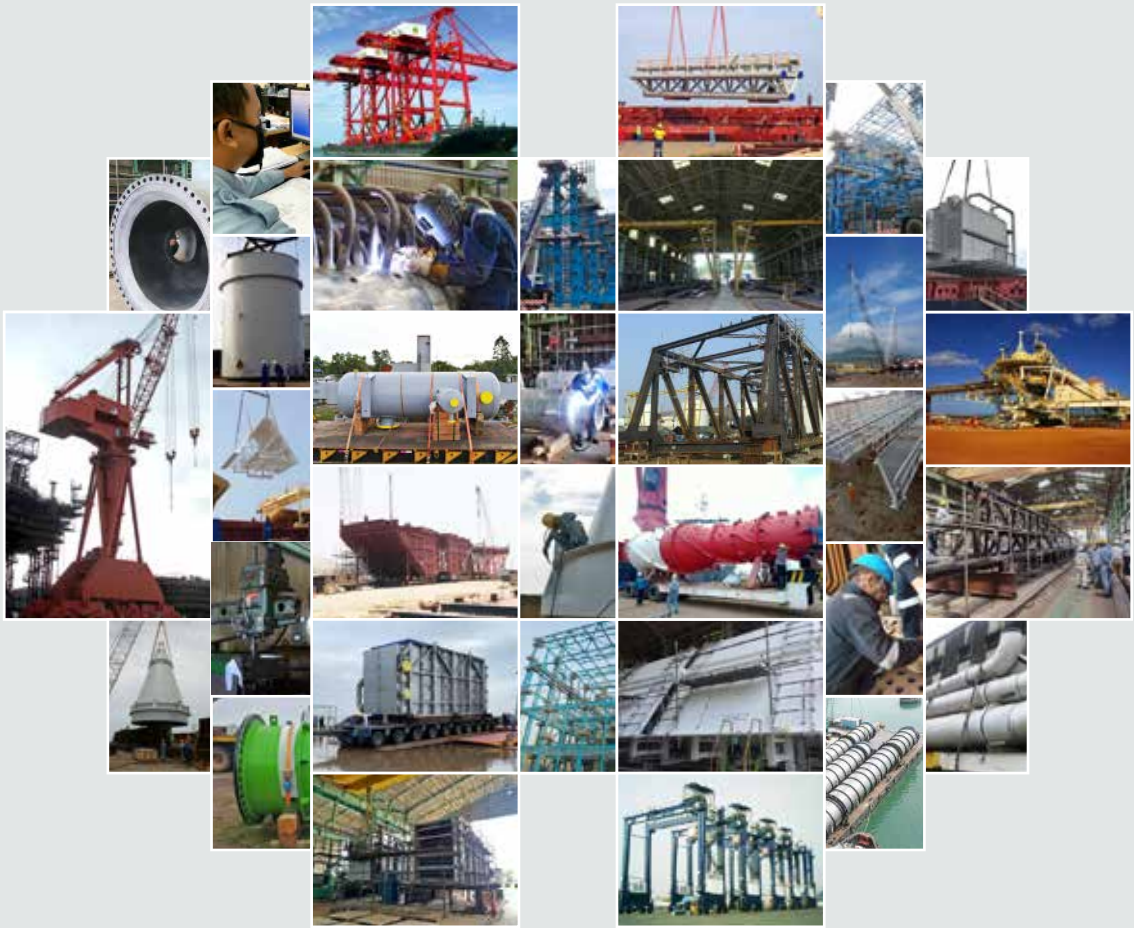
Management systems have been applied in our company to make sure that all fabrication processes can be conducted to meet the international common standard which our customers demand.

Year 2009, IHI Corporation. Japan take over all local company share, together with IHI Corp. PT. IHI Power Service Indonesia has been expanding its business to cover the demand for industrial steel structures, handling heavy equipment (crane), boiler components and piping works.

With total owned area of 25 hectares, including a shop facility and private jetty, we are confident that we can serve you best quality products and services at competitive prices and on time.

Very Truly yours

President Director



IHI Group's ESG Management

We will help resolve social issues
through business to achieve a
sustainable, mutual growth for the
IHI Group and Society

“

**Create a World where
Nature and Technology work in unity**

”

Company Introduction

PT IHI Power Service Indonesia are situated in the industrial area of Cilegon, Banten Province; approximately 100km west of Jakarta.

with a total ground space encompassing 250,000m² and an engineering capability supported by X-Steel (TEKLA) and CAD, as well as boasting a 50,000² m² roofed fabrication shop, an open yard for the full assembly of heavy products complete with a 300m² skid rail for the loading and unloading heavy products and sufficient storage space the Cilegon facility is fully equipped to deal with any task.

What's more, the private seaport (jetty) and bounded area provide extremely convenient for sending and receiving bulky products via shipment directly from the PT IHI Power Service Indonesia facility.

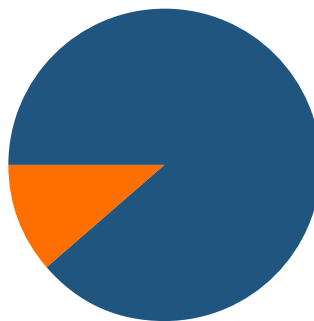
CAPITAL

US \$ 3,4 Million

STAKEHOLDER



11,24%

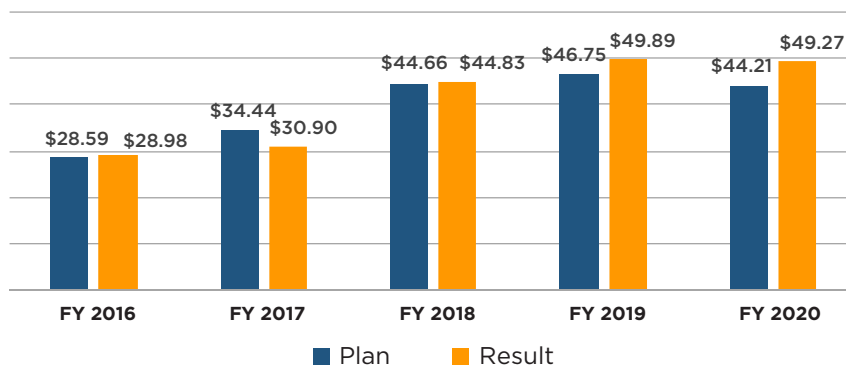


IHI
88,76 %

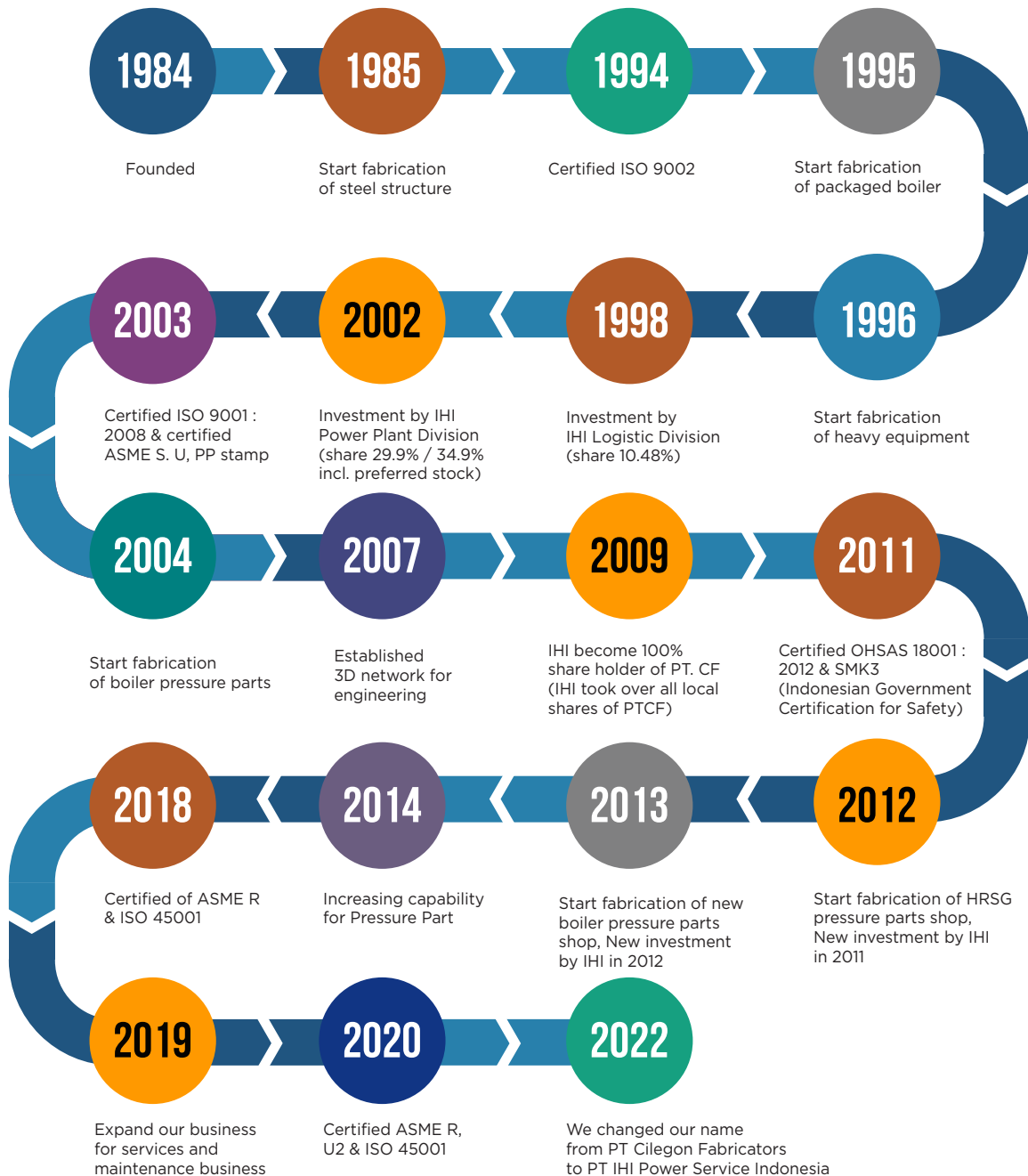
- IHI Corporation, Japan
- Jurong Engineering Limited, Singapore

SALES TREND

Trend of Sales (Million US\$)



Company History







6

Area Plan

1. Steel Structure Shop 1-4
2. Boiler Pressure Part & Piping Shop 5-6
3. HRSG & Pressure Vessel Shop 7-8
4. Boiler Panel Shop 9-10
5. Blasting & Painting Area (Indoor)
6. Blasting & Painting Area (Outdoor)
7. Raw Material Storage
8. Yard Assembly
9. Product Area Storage
10. Private Jetty
11. Main Office

Our Service

1. Steel Structure and Heavy Equipment

CAPABILITY

18,000 Ton per year (existing ave.) and further expansion become 20,000 ton.

FACILITIES

Under Roof Workshop 19,827 m² could cover all activities for fabrication of boiler pressure part.

COMMON DEVICE

CNC Cutting Machine, NC Sawing, Drilling Machine, Bending & Rolling Machine, Horizontal Boring & Milling Machine, Ringer Crane Cap 150 ton shop for erection at year, private jetty (width : 50m x depth : 7m).



DELIVERY PROCESS



TRIAL ASSEMBLY PROCESS



SHOP ASSEMBLY PROCESS

Our Product



RTGC CRANE FOR JICT



FABRICATION STEEL STRUCTURE FOR ROY HILL PROJECT AUSTRALIA



DOLPHIN REPLACEMENT RIO TINTO PROJECT AUSTRALIA



ERECTION STEEL STRUCTURE TURBINE BUILDING SURALAYA 9 & 10



MOBILE SIZING RIG, SPREADER & TRIPPER CAR FOR CLERMONT COAL MINE PROJECT.

Our Service

2. Industrial Equipment (HRSG, Pressure Vessel, HE, Etc.)

CAPABILITY

3,000 Ton per year (existing ave.) and further expansion become 4,000 ton.

FACILITIES

Under Roof Workshop 8,100 m² could cover all activities for fabrication of boiler pressure part.

COMMON DEVICE

2 Unit Finning Machine, 2 Unit Bending Tube 3", 1 Unit Bending Tube 4", Assembled Area, and Hydro test Area.



DELIVERY PRODUCT



HARP HYDRO TEST



FINNING TUBE MACHINE

Our Product



HARP FOR KASHIMA HRSG



GGH BUNDLE KP2 PROJECT



FABRICATION PRESSURE VESSEL FOR
PERTAMINA RU V BALIKPAPAN



FABRICATION CONVECTION FOR
PERTAMINA RU V BALIKPAPAN



FABRICATION & INSTALLATION HEAT EXCHANGER FOR PUPUK KUJANG PLANT

Our Service

3. Boiler Pressure Part & Piping

CAPABILITY

7,800 Ton per year

FACILITIES

Under Roof Workshop
21,600 m² could cover
all activities for
fabrication of boiler
pressure part.

COMMON DEVICE

Membrane Panel
Welding 24+8,
Welding Manipulator,
4" Pipe Bender,
4" NC Pipe Bender,
8 Electrode Panel
Welder,
4 Electrode Gantry
Welder, Equipment
for Surface Preparation
using for Tube, Pipe,
and PWHT Furnace
size 14m x 6m x 4m



BORSCOPE VISUAL INSPECTION



WELDING 9CR PROCESS



PRODUCT DELIVERY

Our Product



BOILER FOR KASHIMA KP2 PROJECT



PRESSURE PART FOR JIMAH POWER PLANT



COOLING WATER PIPE FOR CENTRAL JAVA
2 X 1000 MW



FABRICATION PIPING FOR PATUHA PROJECT



FABRICATION COOLING WATER PIPE
FOR SULSELBAR



FABRICATION AUXILLIARY BOILER
FOR MATARBARI POWER PLANT

Our Service

4. Engineering Works

CAPABILITY

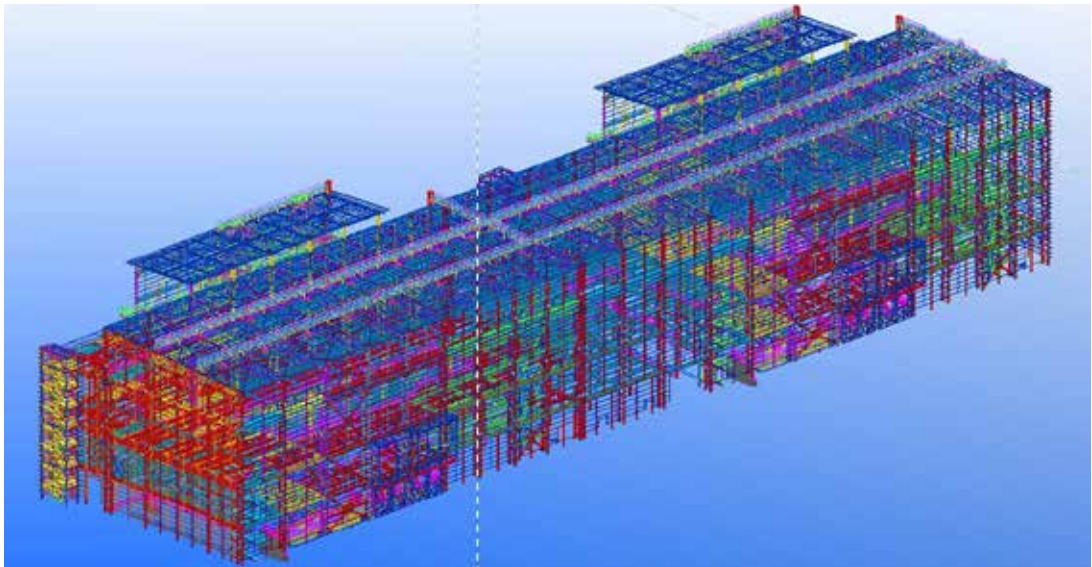
- 6000 Ton per Year
- Shop drawing Works
- Mechanical Design
- Detailing Works

FACILITIES

With engineering office and total 68 Manpower, 12 Operators had been certified by Tekla.

SOFTWARES

- Tekla - 39 Licenses
- Solid work - 12 Licenses
- AutoCad - 33 Licences
- Compress - 1 License
- Autonest - 4 Licences
- Staddpro - 1 License



3D MODELLING



TEKLA & SOLID WORK



COMPRESS

Maintenance

Life-Cycle Solutions of Thermal Power Plant

By utilizing IHI group's global service network and technologies, IPSI provide a wide variety of solutions to contribute to make the Life-Cycle of thermal power plant facilities more effective.

Refreshment Work

Regardless with who the original manufacturer is, IPSI is able to support refreshment of boiler equipment such as pressure parts. IPSI supply high quality equipment with our own dedicated manufacturing shops for boiler equipment.



REPLACEMENT OF SUPERHEATER TUBES

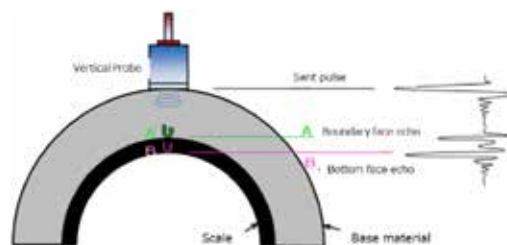


REPLACEMENT OF SUPERHEATER TUBES

On-site Assessment Services

IPSI provide on-site boiler assessment work by our skilled engineers and qualified inspectors.

- **Visual assessment**
- **Non-destructive Inspections**
Radiographic test, Ultrasonic test, Magnetic particle test, Dye-penetration test, Positive Material Identification
- **Advanced Inspection**
Advanced Ultrasonic testing for tube wall or inner scale thickness measurement



ADVANCED UT SCALE THICKNESS MEASUREMENT

Maintenance

Analyses & Diagnosis Services

I PSI undertake a variety of analyses & Diagnosis activities to estimate the lifetime, find the structural problem and root cause of mechanical or corrosive damage of boiler equipment, and provide effective measures.

- **Material's Creep Lifetime Analysis**

- **CFD Flow Simulation**

- **FEM Stress Analysis**

- **Laboratory material analyses**

Microstructure observation

EPMA identification

SEM+EDS identification

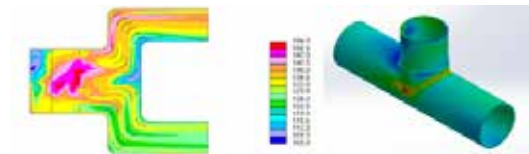
X-ray diffraction (crystal structure analysis)

Hardness testing

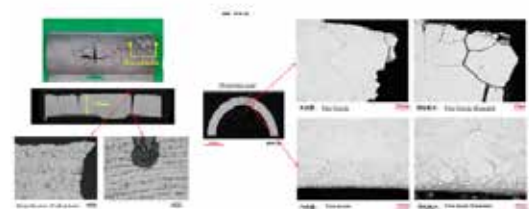
Tensile test

Creep rupture test

Etc.



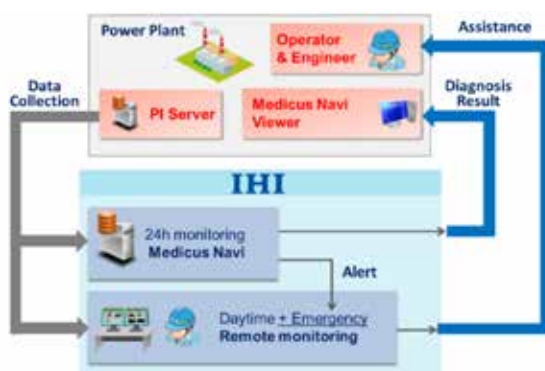
CFD FLOW SIMULATION FEM STRESS ANALYSIS



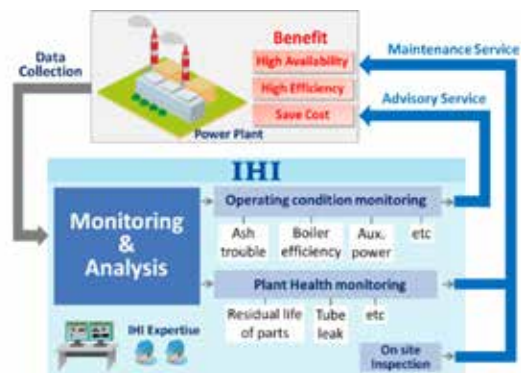
LABORATORY MATERIAL ANALYSES

Operation & Maintenance Assistance Services

MEDICUS NAVI® - IHI developed Advanced operation and maintenance assistance system



OPERATION ASSISTANCE SERVICE



MAINTENANCE ASSISTANCE SERVICE

Maintenance

Toward Carbon-Neutral Society

To achieve Carbon-neutral in Indonesia, IHI Group has focused on the utility value of biomasses derived from wood and agricultural residues, and ammonia that does not emit CO₂ when combusted, and has been developing the combustion technology.

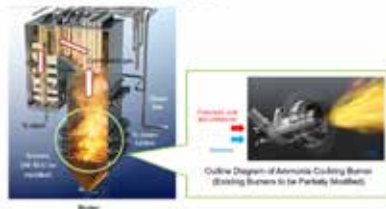
Biomass Firing

IPSI undertake everything from consideration up to implementation of conversion of boiler from fossil fuel firing to co-firing with biomass in the ratio designated by the customer, or biomass mono-firing, while leaving the existing boiler pressure parts as they are.

Ammonia Firing

IHI Group has been developing the combustion technology of ammonia as a new fuel of thermal power plant to reduce CO₂ emission. IHI/IPSI is in several demonstration projects at commercial thermal plants including in Indonesia and aiming to achieve 20% of ammonia co-firing in fiscal 2024.

Reference 2: Outline of Boiler and Modified Burners



Ammonia burner



Signing Ceremony with PT PJB for demonstration projects



Gresik Power Plant (Jawa Timur)

IHI Group has declared “IHI Carbon-neutral 2050” and pledged to make its complete value chain carbon-neutral by 2050. Following URL guides you to further information about “IHI Carbon-neutral 2050” and IHI Group’s ESG management.

(http://inettms.ty.ihi.co.jp/csr/english/esg/i/IHI_ESG_STORYBOOK_en.pdf)

Our Experience List

Item No	Project Name	Location	Client	Contract Value (USD)	Completion Date	Status
1	Handover Office Structure	Surabaya	PT. Baktiindo S.	50	Aug-20	Completed
2	Container House Mall, Bk	Cilegon	Real Estate	800	Aug-20	Completed
3	Container Crane	Padang	ISI Corporation	400	Jul-20	Completed
4	3D Draw for Jarak Road	Proyokan, Surabaya	ISI Corporation	100	Feb-21	Completed
5	Container Crane	Surabaya	ISI Corporation	1,140	Dec-21	Completed
6	ISO Container Crane	Padang	ISI Corporation	340	Nov-20	Completed
7	Container Crane Project B	Tanjung Pinang	PT. Baktiindo S.	1,540	May-20	Completed
8	Mobile Warehouse C/C	Indragiri, Indragiri	ISI Corporation	1,400	Nov-20	Completed
9	Container C/C Project	Surabaya	ISI Corporation	1,500	Nov-20	Completed
10	PTSC Hanger Port C/C	Surabaya	PT. Baktiindo S.	120	Jan-21	Completed
11	Container C/C for B2C2	Cilegon - Cikarang	PT. Baktiindo S.	1,300	May-21	Completed
12	Container C/C	Cilegon - Cikarang	ISI Corporation	1,340	Feb-24	Completed
13	ISI C/C	Tanjung Pinang	ISI Corporation	40	Apr-24	Completed
14	Container C/C	Surabaya	ISI Corporation	700	Jan-24	Completed
15	Storage C/C	Surabaya - Indragiri	ISI Corporation	600	Jan-24	Completed
16	Storage PTSC	Surabaya - Indragiri	ISI Corporation	100	Jan-24	Completed
17	PTSC of Warehouse & Storage for B2C2	Indragiri	ISI Corporation	100	Feb-24	Completed
18	Storage C/C Project	Surabaya	ISI Corporation	100	Feb-24	Completed
19	Storage C/C Project	Surabaya	ISI Corporation	100	Feb-24	Completed
20	Storage C/C Project	Surabaya	ISI Corporation	100	Feb-24	Completed
21	Storage C/C Project	Surabaya	ISI Corporation	100	Feb-24	Completed
22	Storage C/C Project	Surabaya	ISI Corporation	100	Feb-24	Completed
23	Storage C/C Project	Surabaya	ISI Corporation	100	Feb-24	Completed
24	Storage C/C Project	Surabaya	ISI Corporation	100	Feb-24	Completed
25	Storage C/C Project	Surabaya	ISI Corporation	100	Feb-24	Completed
26	Storage C/C Project	Surabaya	ISI Corporation	100	Feb-24	Completed
27	Storage C/C Project	Surabaya	ISI Corporation	100	Feb-24	Completed
28	Storage C/C Project	Surabaya	ISI Corporation	100	Feb-24	Completed
29	Storage C/C Project	Surabaya	ISI Corporation	100	Feb-24	Completed
30	Storage C/C Project	Surabaya	ISI Corporation	100	Feb-24	Completed
31	Storage C/C Project	Surabaya	ISI Corporation	100	Feb-24	Completed
32	Storage C/C Project	Surabaya	ISI Corporation	100	Feb-24	Completed
33	Storage C/C Project	Surabaya	ISI Corporation	100	Feb-24	Completed
34	Storage C/C Project	Surabaya	ISI Corporation	100	Feb-24	Completed
35	Storage C/C Project	Surabaya	ISI Corporation	100	Feb-24	Completed
36	Storage C/C Project	Surabaya	ISI Corporation	100	Feb-24	Completed
37	Storage C/C Project	Surabaya	ISI Corporation	100	Feb-24	Completed
38	Storage C/C Project	Surabaya	ISI Corporation	100	Feb-24	Completed
39	Storage C/C Project	Surabaya	ISI Corporation	100	Feb-24	Completed
40	Storage C/C Project	Surabaya	ISI Corporation	100	Feb-24	Completed
41	Storage C/C Project	Surabaya	ISI Corporation	100	Feb-24	Completed
42	Storage C/C Project	Surabaya	ISI Corporation	100	Feb-24	Completed
43	Storage C/C Project	Surabaya	ISI Corporation	100	Feb-24	Completed
44	Storage C/C Project	Surabaya	ISI Corporation	100	Feb-24	Completed
45	Storage C/C Project	Surabaya	ISI Corporation	100	Feb-24	Completed
46	Storage C/C Project	Surabaya	ISI Corporation	100	Feb-24	Completed
47	Storage C/C Project	Surabaya	ISI Corporation	100	Feb-24	Completed
48	Storage C/C Project	Surabaya	ISI Corporation	100	Feb-24	Completed
49	Storage C/C Project	Surabaya	ISI Corporation	100	Feb-24	Completed
50	Storage C/C Project	Surabaya	ISI Corporation	100	Feb-24	Completed
51	Storage C/C Project	Surabaya	ISI Corporation	100	Feb-24	Completed
52	Storage C/C Project	Surabaya	ISI Corporation	100	Feb-24	Completed
53	Storage C/C Project	Surabaya	ISI Corporation	100	Feb-24	Completed
54	Storage C/C Project	Surabaya	ISI Corporation	100	Feb-24	Completed
55	Storage C/C Project	Surabaya	ISI Corporation	100	Feb-24	Completed
56	Storage C/C Project	Surabaya	ISI Corporation	100	Feb-24	Completed
57	Storage C/C Project	Surabaya	ISI Corporation	100	Feb-24	Completed
58	Storage C/C Project	Surabaya	ISI Corporation	100	Feb-24	Completed
59	Storage C/C Project	Surabaya	ISI Corporation	100	Feb-24	Completed
60	Storage C/C Project	Surabaya	ISI Corporation	100	Feb-24	Completed
61	Storage C/C Project	Surabaya	ISI Corporation	100	Feb-24	Completed
62	Storage C/C Project	Surabaya	ISI Corporation	100	Feb-24	Completed
63	Storage C/C Project	Surabaya	ISI Corporation	100	Feb-24	Completed
64	Storage C/C Project	Surabaya	ISI Corporation	100	Feb-24	Completed
65	Storage C/C Project	Surabaya	ISI Corporation	100	Feb-24	Completed
66	Storage C/C Project	Surabaya	ISI Corporation	100	Feb-24	Completed
67	Storage C/C Project	Surabaya	ISI Corporation	100	Feb-24	Completed
68	Storage C/C Project	Surabaya	ISI Corporation	100	Feb-24	Completed
69	Storage C/C Project	Surabaya	ISI Corporation	100	Feb-24	Completed
70	Storage C/C Project	Surabaya	ISI Corporation	100	Feb-24	Completed
71	Storage C/C Project	Surabaya	ISI Corporation	100	Feb-24	Completed
72	Storage C/C Project	Surabaya	ISI Corporation	100	Feb-24	Completed
73	Storage C/C Project	Surabaya	ISI Corporation	100	Feb-24	Completed
74	Storage C/C Project	Surabaya	ISI Corporation	100	Feb-24	Completed
75	Storage C/C Project	Surabaya	ISI Corporation	100	Feb-24	Completed
76	Storage C/C Project	Surabaya	ISI Corporation	100	Feb-24	Completed
77	Storage C/C Project	Surabaya	ISI Corporation	100	Feb-24	Completed
78	Storage C/C Project	Surabaya	ISI Corporation	100	Feb-24	Completed
79	Storage C/C Project	Surabaya	ISI Corporation	100	Feb-24	Completed
80	Storage C/C Project	Surabaya	ISI Corporation	100	Feb-24	Completed
81	Storage C/C Project	Surabaya	ISI Corporation	100	Feb-24	Completed
82	Storage C/C Project	Surabaya	ISI Corporation	100	Feb-24	Completed
83	Storage C/C Project	Surabaya	ISI Corporation	100	Feb-24	Completed
84	Storage C/C Project	Surabaya	ISI Corporation	100	Feb-24	Completed
85	Storage C/C Project	Surabaya	ISI Corporation	100	Feb-24	Completed
86	Storage C/C Project	Surabaya	ISI Corporation	100	Feb-24	Completed
87	Storage C/C Project	Surabaya	ISI Corporation	100	Feb-24	Completed
88	Storage C/C Project	Surabaya	ISI Corporation	100	Feb-24	Completed
89	Storage C/C Project	Surabaya	ISI Corporation	100	Feb-24	Completed
90	Storage C/C Project	Surabaya	ISI Corporation	100	Feb-24	Completed
91	Storage C/C Project	Surabaya	ISI Corporation	100	Feb-24	Completed
92	Storage C/C Project	Surabaya	ISI Corporation	100	Feb-24	Completed
93	Storage C/C Project	Surabaya	ISI Corporation	100	Feb-24	Completed
94	Storage C/C Project	Surabaya	ISI Corporation	100	Feb-24	Completed
95	Storage C/C Project	Surabaya	ISI Corporation	100	Feb-24	Completed
96	Storage C/C Project	Surabaya	ISI Corporation	100	Feb-24	Completed
97	Storage C/C Project	Surabaya	ISI Corporation	100	Feb-24	Completed
98	Storage C/C Project	Surabaya	ISI Corporation	100	Feb-24	Completed
99	Storage C/C Project	Surabaya	ISI Corporation	100	Feb-24	Completed
100	Storage C/C Project	Surabaya	ISI Corporation	100	Feb-24	Completed

Our Experience List

[illegible]

Facilities



TBM HSE



FIRE DRILL



CLINIC



TRAINING WCIS & IHI COMPLIANCE



PRIVATE JETTY UP TO 14000 DWT



24+8 MEMBRANE PANEL MACHINE



YARD AREA APPROXIMATELY 30,000 M2



BLASTING AREA (INDOOR) L 15M X W 10M X H 4.45M



PAINTING AREA (INDOOR)



PWHT FURNACE ROOM L14M X W 5M X H 2.5M



RT CHAMBER

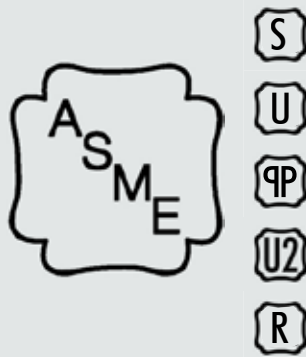
Certification



ISO 9001 : 2015



ISO 45001



ASME STAMP



SMK 3



PROPER



CERTIFICATE OF AUTHORIZATION

The named company is authorized by the American Society of Mechanical Engineers (ASME) for the scope of activity shown below in accordance with the applicable rules of the ASME Boiler and Pressure Vessel Code. The use of the certification mark and the authority granted by this Certificate of Authorization are subject to the provisions of the agreement set forth in the application. Any construction stamped with this certification mark shall have been built strictly in accordance with the provisions of the ASME Boiler and Pressure Vessel Code.

COMPANY:

PT. IHI Power Service Indonesia
Jl. Raya Bojonegara-Salira
Argawana Puloampel
Serang, Banten 42454
Indonesia

SCOPE:

Manufacture of pressure vessels at the above location and field sites controlled by the above location (This authorization does not cover insipregnated graphite)

AUTHORIZED:

EXPIRES:

CERTIFICATE NUMBER: 33,378

Richard R. Hoffman
Board Chair, Conformity Assessment

Joseph L. Hoffman
Executive Director, Conformity Assessment



CERTIFICATE



Certificate No. OHS 00046

SUCOFINDO INTERNATIONAL CERTIFICATION SERVICES
Grafika Boulevard B1 Floor - Jl. Raya Pahlawan No. 34 Jakarta 12760
Phone: +62 21 7600000 ext. 1021, Fax: +62 21 7600001 / 7600002, Email: info@sucofindo.com

Menyatakan bahwa / Certify that:

PT. IHI POWER SERVICE INDONESIA
Jl. Raya Bojonegara-Salira, Desa Argawana, Kecamatan Puloampel
Rabuputan Serang, Banten - INDONESIA

menyediakan sistem manajemen keselamatan & kesehatan kerja yang memenuhi
has implemented occupational health and safety management system that comply with

ISO 45001:2018

Occupational Health and Safety Management System-Requirements

Menyatakan bahwa / The scope of certification:

Engineering Design & Fabrication of Steel Structure & Pressure Part
for Power Plants and Industrial Plant, Installation, Commissioning and
Repair Maintenance Works for Pressure Part.

SECTOR CODE: 17; 34

Berlaku ini bersama dengan submenit bahwa inspeksi sesuai dengan kriteria
sebagaimana ditetapkan oleh SUCOFINDO INTERNATIONAL CERTIFICATION SERVICES
This certificate is valid provided that the organization continues to meet the criteria as
set down by SUCOFINDO INTERNATIONAL CERTIFICATION SERVICES.

Ir. Tetyan Andriani, M.M.
Vice President

Ini berlaku dari 01 Februari 2020 sampai 01 Februari 2023
It is valid from February 01st, 2020 until February 01st, 2023

Sertifikat Penghargaan Certificate of Appreciation

SISTEM MANAJEMEN
KESELAMATAN DAN KESEHATAN KERJA
OCCUPATIONAL SAFETY AND HEALTH
MANAGEMENT SYSTEM

Berdasarkan
hasil Pengawasan Berkeseluruhan Republik Indonesia
No. 508 Tahun 2020

Menyatakan bahwa / This is to certify that

Nama perusahaan / Name of company
PT. IHI POWER SERVICE INDONESIA

Alamat / Address
Jl. Bojonegara - Salira, Desa Argawana, Kec. Puloampel
Serang, Provinsi Banten

Sektor industri / Sector of industry
LOGAM DASAR DAN PRODUK PARIKAR LOGAM

memcapai Sistem Manajemen Keselamatan dan Kesehatan
Keamanan Occupational Safety and Health Management
System 98,36% untuk kategori tingkat Lanjutan (156)
Achieved 98,36% for Advanced level category
sertifikat ini berlaku untuk jangka waktu 3 (tiga) tahun sejak di
This certificate is valid for 3 (three) years from the date of its



THE NATIONAL BOARD OF BOILER & PRESSURE VESSEL INSPECTORS

Certificate of Authorization



This is to certify that

PT. IHI Power Service Indonesia
Jl. Raya Bojonegara-Salira
Argawana Puloampel
Serang, Banten 42454
Indonesia

Acceptable Abbreviation: PTCF

is authorized to use the R Symbol in accordance with the
provisions of the National Board Inspection Code and NB-473
Accreditation of "R" Repair Organizations.

All activities within the scope of this Authorization shall be
controlled by the above location.

The scope of this Authorization is limited to:

Mechanical
Repairs and Alterations
At
Shop and Field Locations

Certification Number: 10817

Issue Date:

Expiration Date:

Executive Director

Robert J. Hoffman



Certificate of Approval

This is to certify that the Management System of:

PT IHI POWER SERVICE INDONESIA

Jl. Raya Bojonegara - Salira, Argawana - Puloampel, Serang - Banten, 42454, Indonesia

has been approved by LRQA to the following standards:

ISO 9001:2015

Approval number(s): ISO 9001 - 0044747

The scope of this approval is applicable to:

Engineering Design & Fabrication of Steel Structure & Pressure Part for Power Plants and Industrial Plant, Installation,
Commissioning, and Repair Maintenance Works for Pressure Part



KEMENTERIAN LINGKUNGAN HIDUP DAN KEHUTANAN REPUBLIK INDONESIA

MENGANUGERAHKAN PENGHARGAAN
PROGRAM PENILAIAN PERINGKAT KINERJA PERUSAHAAN
DALAM PENGELOLAAN LINGKUNGAN HIDUP

PROPER
PERINGKAT
BIRU

KEPADA
PT. IHI Power Service Indonesia

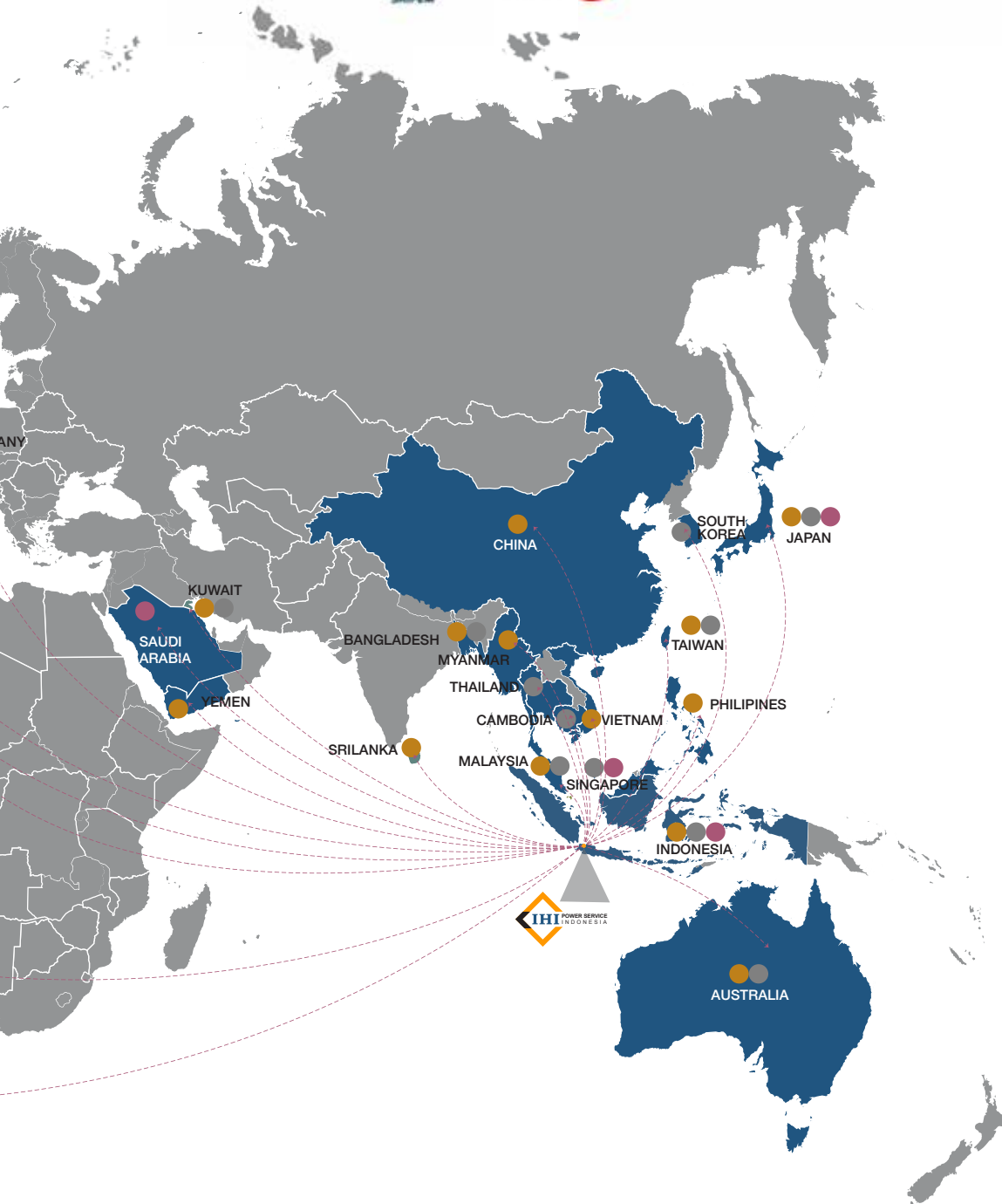


Menyatakan bahwa / This is to certify that
Nama perusahaan / Name of company
PT. IHI POWER SERVICE INDONESIA
Alamat / Address
Jl. Bojonegara - Salira, Desa Argawana, Kec. Puloampel
Serang, Provinsi Banten
Sektor industri / Sector of industry
LOGAM DASAR DAN PRODUK PARIKAR LOGAM
Telah menerapkan Sistem Manajemen Keselamatan dan Kesehatan
Keamanan Occupational Safety and Health Management System
Has implemented Occupational Safety and Health Management System
Telah mencapai 98,36% untuk kategori tingkat Lanjutan (156)
Achieved 98,36% for Advanced level category
Sertifikat ini berlaku untuk jangka waktu 3 (tiga) tahun sejak di
This certificate is valid for 3 (three) years from the date of its

Our Experience on Worldwide

- Steel Structure & Heavy Equipment
- Boiler Pressure Part
- HRS

Our Clients





Head Office & Workshop

Jl. Raya Bojonegara - Salira, Argawana
Pulo Ampel, Serang - Banten 42454 Indonesia

businessdev@ipsi.co.id
www.ipsi.co.id